



KANGDA®



KANGDA® CAST
KANGDA® SPLINT



About us



Jinwei Kangda is a professional orthopedic products and sport support company integrating R&D/production/domestic & foreign sales. It is one of the suppliers for Central Reserve, China Meheco and military materials procurement. The company owned a hardworking, innovative and pragmatic professional team has excellent production and inspection equipment, including 24 imported casting tape and splint production lines, 20 support and brace production lines and a research and development center built together with USA Amerix. It mainly produces casting tape and splint, orthosis brace, sport support and matched auxiliary products.

The company has gotten new high-tech enterprise certification in Beijing, and passed by ISO9001 and ISO13485 international quality management system authentication and all products got the FDA and CE approval. "Kangda" brand casting tape and splint have become a well-known brand and the sales volume is far ahead for more than continuous 17 years in the same industry. It has been used in thousands of above Class II Grade A hospitals in China and has more than 68% market share. It sells more than 50 countries and regions such as USA, Europe, Middle East and Asia.

Now it becomes Asia's largest scientific research, production and export base for orthopedic casting tape and splint.

Based on the principle of "Honesty & Efficiency, Pursuit of Excellence and Harmonious Development", wholeheartedly welcome domestic and foreign distributors to purchase, cooperate, complement each other to achieve win-win cooperation, mutual development and create brilliant achievements.





Design and Development

The company has the advantages of talents, R&D and innovation. It has obtained 1 national invention patent, 14 national utility model patents and national design patents. It fills the gap of domestic splints and they are the initial company in China to begin to produce the long splint roll, sleeve cast, waterless casting tape and soft casting tape. It has continuously improved its technology and has become the industry leader. The company and the United States Amerix joint together to set up R&D center and casting tape and splint laboratory and develop 2-3 new products each year to launch to market. This enhances the company's core competitiveness and development potential.



Laboratory

Quality Control

The company was passed by the ISO9001:2008 and ISO13485:2012 international quality management system authenticated by TÜV company and has been effectively controlled from new product design and R&D, raw material procurement, products production, delivery and after-service whole process, so that form perfect R&D, production, sales, logistics and after-sales service systems to insure quality and customer satisfaction. All products got the FDA and CE approval.



Workshop



Training



Workshop



Workshop



Warehouse



Disaster Relief of Wenchuan Earthquake



Disaster Relief of Nepal



Manufacturing Capacity

More than 17 years of R&D and sales history has created a professionally technical team and a well-trained workforce to provide a strong guarantee for market supply. Advanced production equipment and most of raw materials independent production, it achieves one-stop production process from fabric weaving, polyurethane synthesis to production. Annually it produces 6 million pieces of casting tape, 4 million pieces of splints, 3 million pieces of support and brace, and 1 million rolls of elastic bandage and cast padding, it is the largest casting tape and splint R&D, production and export base in Asia.

R&D Process

In order to promote the upgrade of traditional gypsum bandage and meet the different level demand, in the course of promoting and applying casting tape & splint for more than 17 years ,we proceed three major upgrade: the first generation of product is made of polyester fiber and the resin with formulas in 1999, its main features are good toughness and strong impact resistance; the second generation of product is made of glass fiber and synthetic polyurethane with formulas in 2005, its main features are high strength and fast curing; the third generation of product is made of our exclusive innovative polyester cotton and polyurethane with formula in 2012. In the premise of ensuring the strength to meet the clinical requirements, it is characterized by a more conformable, lighter, more breathable and more convenient operation. Kangda casting tape and splint with characteristics of more conformable, lighter, more breathable and more easier operation are very popular in the clinic and market.



Medical Protector Series



Medical External Fixation Brace

Catalogue

I. Orthopedic Casting Tape

1. Polyester Casting Tape
2. Soft Casting Tape
3. Fiberglass Casting Tape
4. Waterless Casting Tape
5. Comfortable Casting Tape
6. Sleeve Casting Tape

II. Orthopedic Splint

1. Polyester Splint
2. Fiberglass Splint
3. Comfortable Splint
4. 4.5m Roll Splint

III. Auxiliary Products

1. Elastic Bandage
2. Cast Padding
3. Stockinette
4. Electric Plaster Saw

Features

- **High Strength:** Its strength is 20 times than P.O.P. bandage, it with good toughness and strong impact resistance can effectively protect the treatment part.
- **Light Weight:** Only 1/5 of the weight of P.O.P. bandage and 1/3 of the thickness, it minimize the burden of human activities.
- **Fast Curing:** It is solidified in 3-5 minutes after soaking in water and can reach to fixing functional strength after 10 minutes. It can effectively prevent the fracture displacement from reduction of fracture status and save time for doctors and patients.
- **Breathable:** The casting tape fabric with net hole has excellent air perme ability. It can effectively prevent the fracture partshift from reduction status of fracture and save time for doctors and patients.
- **X-ray Transparency:** Excellent x-ray translucency, it can clearly observe the bone joiner and healing and provide a guarantee for the accuracy and perfection of the surgery.
- **Easy to Operate:** Just in 20-30°C temperature water for 3minutes the operation can be finished .
- **Safety and Comfort:** After curing, its exothermic temperature is suitable and its contractibility is small and it does not cause skin tightness, itching and other discomfort.



High Strength



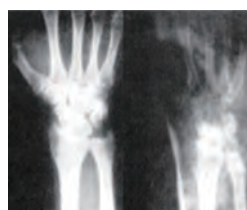
Breathable



Light Weight



Fast Curing



X-ray Transparency



Varied Specifications

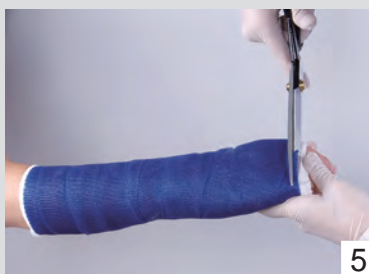
• Numerous in Variety and Specifications

The product line is rich. It can be divided into polyester casting tape, fiberglass casting tape and comfortable casting tape according to different materials. The performance and characteristics are varied, the color and perfume are different. It can meet different demand. Many different specifications can be used to different parts, doctor can freely choose as age and body of patient.



Instructions

- The doctor wears surgical latex gloves.
- Put the stockinette on injured part and then wrap with cast padding on it.
- Open the package and immerse the casting tape into normal-temperature water and squeeze 2-3 times to let it soak the water fully, and then take it out and remove the excess water.
- Spirally wrap it on injured part, overlapping each layer 1/2-2/3. The tightness should be appropriate, if the too loose in each layer, may affect cast strength; if too tight, will affect the blood circulation. The strength of the cast is related with number of layers, usually wrap with 3-4 layers on the part which don't need strong support and 5-6 layers on the part which need strong support.
- In order to ensure adhesion between the layers and fit with the limbs shape, after warping, doctor need touch the surface flatly by hands with water.
- Usually the operation should be finished in 3 minutes, the curing starts in 3-5 minutes, and after 10 minutes it can reach the functional fixing strength.



Cautions

- The doctor wears gloves and the injured part is wore stockinette and cast padding, avoiding the polyurethane to stick on the skin or clothes.
- After opening, uses it and shapes on injured part immediately, don't open several rolls at the same time.
- The cast curing requires proper water temperature, higher temperature will let the curing time faster, lower temperature will let the curing time slower, but too higher or too lower temperature both can affect curing effect.
- If the soaking or operation time is overlong, it will affect the adhesion in each layer and also affect the shaping quality.
- Duration of therapy, doctor should tell patients try not to wet the casting tape to avoid skin discomfort.
- Electric plaster saws are required for dismantling.

Polyester Casting Tape

Features

- Made of polyester fiber fabric coated with polyurethane.
- Different types of products have different strengths.
- Good toughness, strong impact resistance.
- The waste can be completely burned and more eco-friendly.
- More economical.
- High strength, can effectively protect the injured part .
- White, blue, green, red and orange color are available.
- The finished product with vivid color.



Soft Casting Tape

It is soft and good elastic after curing.

Can be used for slight fractures, sprain, contusion and sports protection.

Various color are available.

By medical scissors it can be easily removed.

Product Information

Model	Specification	Packaging	Color
CP 002	5.0cm x 360cm	10 pieces x 12 boxes/carton	White, Blue, Green, Red, Orange
CP 003	7.5cm x 360cm	10 pieces x 12 boxes/carton	White, Blue, Green, Red, Orange
CP 004	10.0cm x 360cm	10 pieces x 9 boxes/carton	White, Blue, Green, Red, Orange
CP 005	12.5cm x 360cm	10 pieces x 9 boxes/carton	White, Blue, Green, Red, Orange
CP 006	15.0cm x 360cm	10 pieces x 9 boxes/carton	White, Blue, Green, Red, Orange

Note: CP-Polyester Casting Tape

Fiberglass Casting Tape

Features

- Made of fiberglass fabric coated with polyurethane.
- High strength, fix firmly , it can effectively protect the fracture part.
- Fast curing, saving clinicians time for surgery.
- Operation is more convenient.



Product Information

Model	Specification	Packaging	Color
CF 002	5.0cm x 360cm	10 pieces x 12 boxes/carton	White
CF 003	7.5cm x 360cm	10 pieces x 12 boxes/carton	White
CF 004	10.0cm x 360cm	10 pieces x 9 boxes/carton	White
CF 005	12.5cm x 360cm	10 pieces x 9 boxes/carton	White
CF 006	15.0cm x 360cm	10 pieces x 9 boxes/carton	White

Note:CF-Fiberglass Casting Tape

Comfortable Casting Tape

Features

- It is made of polyester cotton coated with polyurethane.
- The material has good ductility and the net weaving structure has better plasticity.
- Porous mesh structure design makes it lighter weight, better breathable, better x-ray transparency.
- Five-side sealed bag design, the bag is easier to open.
- The waste can be completely burned and more eco-friendly.



Product Information

Model	Specification	Packaging	Color
CT 002	5.0cm x 360cm	10 pieces x 15 boxes/carton	White
CT 003	7.5cm x 360cm	10 pieces x 15 boxes/carton	White
CT 004	10.0cm x 360cm	10 pieces x 12 boxes/carton	White
CT 005	12.5cm x 360cm	10 pieces x 9 boxes/carton	White
CT 006	15.0cm x 360cm	10 pieces x 9 boxes/carton	White

Note: CT-Polyester Cotton Casting Tape

Waterless Casting Tape

Features

- Made of fiberglass fabric coated with polyurethane.
- When doctor uses, don't need to immerse it into water, after warping, just put the polyurethane on the surface of cast.
- Don't need water, so inner padding can be kept dry. The patient feel more comfortable.
- Don't need water, so doctors with sufficient time can operate it simply
- The lubricity of the curing polyurethane make it easier to shape.

Curing Polyurethane Features

- It is mainly composed of nano materials polymer.
- Non-toxic.
- Non-irritating.
- Does not produce excess heat.
- Rapid penetration, chemical bonding more thoroughly.

Instructions



1. The bandage should not be immersed in water, twined on the injured parts.



2. Dispense proper amount curing polyurethane onto palm.



3. Smear evenly on the twined casting tape, until the dough is smooth.

Sleeve Casting Tape

Features

- It is made of polymer cotton weaved into sleeve and then coated with polyurethane.
- The large mesh weaving technology makes it easier to shape, better breathable and x-ray transparency.
- The operation is more simple, just need to directly wear it on the padding.
- It is easier to shape on the bend joint part.
- Especially it is good for children's fracture emergency.
- It can also be used as prop according to clinical needs.



Product Information

Model	Width (cm)	Length (cm)	Unit	Applicable parts
CT210*	2in (5.0cm)	25	pieces	Long arm or short leg
CT214*		35	pieces	Short or long leg
CT218*		45	pieces	Long leg
CT224*		60	pieces	Long leg
CT310	3in (7.5cm)	25	pieces	Forearm (palm and wrist)
CT314		35	pieces	Long arm or short leg
CT315		40	pieces	Long arm or short leg
CT322		55	pieces	Short leg
CT328		70	pieces	Long leg
CT335		90	pieces	Long leg
CT414		4in (10.0cm)	35	pieces
CT420	50		pieces	Short leg
CT422	55		pieces	Short leg
CT424	60		pieces	Long leg
CT430	75		pieces	Long leg
CT435	90		pieces	Long leg
CT522	5in (12.5cm)		55	pieces
CT525		65	pieces	Long leg
CT535		90	pieces	Long leg

Note: 1. the model with * sign have forked thumb padding

Operating Procedures



1. Select the suitable model sleeve cast as per different injured part and then wear the double-deck padding on the injured part.



2. Take the sleeve cast from the sealed bag, rolled it and then put it into water at 20-30°C for 10-20 seconds and press it for several times by hands to make it soak water fully, and then take it out of water and twist it to remove excess water.



3. Wear the sleeve on the injured limb from the distal end to the proximal end, it will be curing in 3-5 minutes after shaping and reach functional fixing strength in 30 minutes.



4. Use a plaster scissor or electric plaster saw to remove it along the red line on sleeve cast.

Orthopedic Splint

Features

- **High Strength:** The strength of polymer splint is more than 5 times than plaster splint, which can protect the injured part effectively.
- **Light Weight:** It is just 1/5 of weight of the plaster splint, 1/3 of the thickness and minimize the burden on human activities.
- **Fast Curing:** The polymer splint begins to curing in 3-5 minutes after soaking in water and it can reach a functional fixing strength after 30 minutes. It can effectively prevent displacement from reduction of fracture and save time for doctors and patients.
- **Breathable:** The fabric is lighter and has many small holes. It has excellent air permeability and effectively prevents skin from itching and odor.
- **X-ray:** Doctor can clearly observe the bone and healing conditions by x-ray machine, this provide a guarantee for the accuracy and perfection of the surgery.
- **Easy to Operate:** Just in 20-30°C temperature water and 3 minutes the operation can be finished, it can be removed with ordinary scissors .
- **Several Different Variety and Specifications:** 1/2/3 generation splints with different technology and materials can meet different needs; various specifications can be used to different body part and different age.

Instructions

- According to different part of part, select the suitable size. It is not necessary to wear gloves.
- After opening the bag, soak it into normal temperature water and squeeze 2-3 times in 4-6 minutes to let the outside padding to absorb water fully.
- Extrude or use a dry towel to remove excess moisture.
- Place the inner lining surface of the splint close to the part need to fix, and fix it with gauze bandage or elastic bandage. The tightness should be moderate.
- Shape it by hand to ensure that the splint and limb touch each other closely
- It will be curing in 3 minutes and reach to functional fixing strength after 30 minutes.



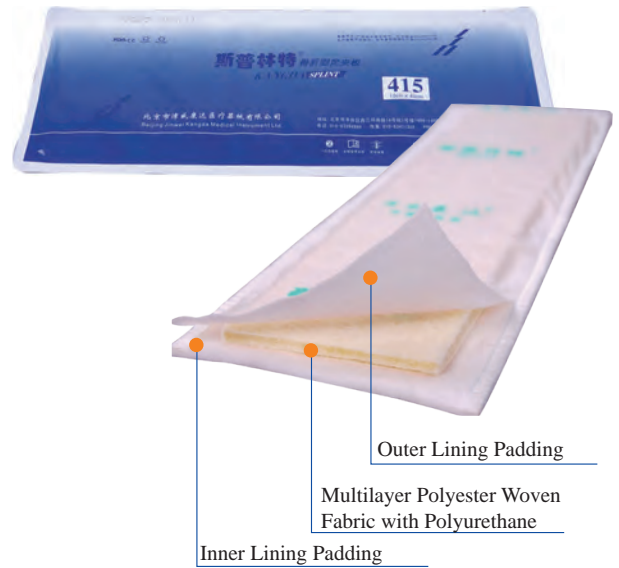
Attention

- The curing speed is affected by the temperature and soaking time, doctor should adjust them as per the clinical demand.
- On the product pouch marked with the manufacturing date and expiring date and should be used in the period of validity.
- The product is with sealed pouch. Pouch must not leak when transport or store. Before using, need to confirm if it is hardened, if hardened, should not be used.
- If you find any quality problems, please contact our factory or agent in time.

Polyester Splint

Features

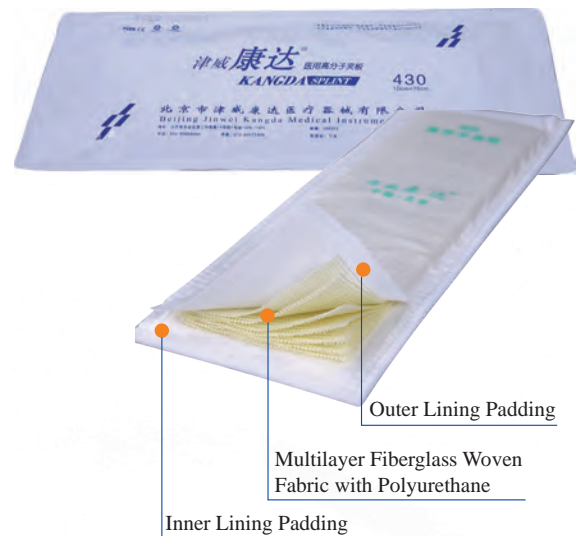
- It is made of multilayer polyester woven fabric and inner and outer lining padding impregnated with polyurethane with special process.
- Medium strength and light weight.
- Shaping and air permeability are slight poor.
- More economical and practical.
- The splint should be squeezed for several times in water to ensure the inner and outside of splint soak enough water.



Fiberglass Splint

Features

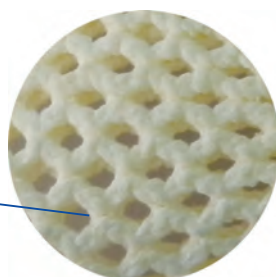
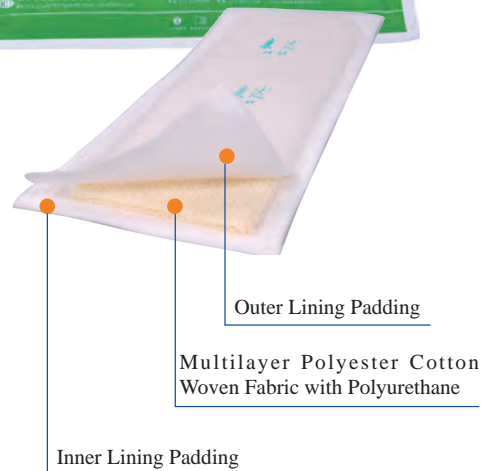
- It is made of multilayer fiberglass woven fabric and inner and outer lining padding impregnated with polyurethane with special process.
- High strength, it can protect the injured part effectively .
- It can effectively prevent the fracture displacement from reduction of fracture status and save time for doctors and patients.
- Easy to immerse into water and operation, let the patient feel light and comfortable.



Comfortable Splint

Features

- It is made of multilayer polyester cotton woven fabric and inner and outer lining padding impregnated with polyurethane with special process.
- Large mesh woven structure, excellent shape ability.
- Lighter, more breathable, more x-ray transparency.
- The waste can be completely burned and more eco-friendly.
- Note that the splint should be squeezed for several times in 20-30°C water to ensure it to soak water fully.



Large Mesh Weaving Process

Orthopedic Splint Product Information

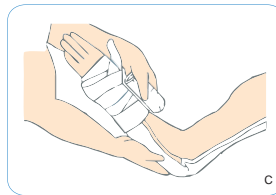
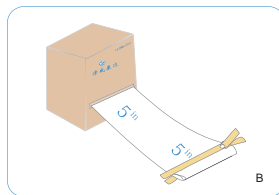
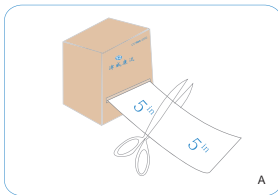
Model	Specifications	Packaging	Applicable Parts
SP/SF/ST 312	7.5cm×30cm	20 pieces x 6 boxes/Carton	Short arm
SP/SF/ST 335	7.5cm×90cm	10 pieces x 6 boxes/Carton	Long arm
SP/SF/ST 415	10cm×40cm	20 pieces x 6 boxes/Carton	Short arm
SP/SF/ST 420	10cm×50cm	20 pieces x 6 boxes/Carton	Short arm
SP/SF/ST 430	10cm×76cm	10 pieces x 6 boxes/Carton	Lower leg or long arm
SP/SF/ST 520	12.5cm×50cm	10 pieces x 6 boxes/Carton	Lower leg
SP/SF/ST 530	12.5cm×76cm	10 pieces x 6 boxes/Carton	Lower leg
SP/SF/ST 545	12.5cm×115cm	5 pieces x 6 boxes/Carton	Thigh
SP/SF/ST 630	15cm×76cm	5/10/5 pieces x 6 boxes/Carton	Lower leg
SP/SF/ST 645	15cm×115cm	5 pieces x 6 boxes/Carton	Thigh

Note: SP-Polyester Splint, SF-Fiberglass Splint, ST-Polyester Cotton Splint

4.5m Roll Splint

Features

- It is made of multilayer polyester cotton woven fabric and inner and outer lining padding impregnated with polyurethane with special process.
- Large mesh woven structure, excellent shapeability.
- Lighter, more breathable, more x-ray transparency.
- Choose the right model, cut it as needed, more convenient and more economical.
- With a special sealing clip, after cutting the splint, seal it first and then preserve.



Product Information

Model	Specifications	Packaging	Applicable Parts
KD2180	5.0cm×450cm	1 piece x 4 boxes/Carton	Upper limb
KD3180	7.5cm×450cm	1 piece x 4 boxes/Carton	Upper limb
KD4180	10.0cm×450cm	1 piece x 4 boxes/Carton	Upper limb Lower limb
KD5180	12.5cm×450cm	1 piece x 4 boxes/Carton	Lower limb
KD6180	15.0cm×450cm	1 piece x 4 boxes/Carton	Lower limb

Auxiliary Product

Cast Padding

- It is made of cotton fiber or polyester and cotton mixed fiber or polyester fiber.
- It is good auxiliary products for casting tape and others bandages.
- As padding, it can protect skin and isolate the pollution.
- Several size can be used for different people.
- Special size can be produced according to orders' request.

Specifications	Packaging
5.0cm×270cm	720 pieces/carton
7.5cm×270cm	480 pieces/carton
10.0cm×270cm	360 pieces/carton
15.0cm×270cm	240 pieces/carton
20.0cm×270cm	180 pieces/carton



Elastic Bandage

- Adopting advanced and unique textile technology, it has good air permeability.
- Used for fixing and bandaging of polymer splints.
- Feel good, soft, soft pressure and easy to bind up.
- Many specifications for different parts of body.
- Special specifications can be produced according to orders request .



Model	Specifications	Packaging	Applicable Parts
EB003	7.5cm×4.5m	12 pieces x 40 bags/Carton	Upper limb or Lower limb
EB004	10.0cm×4.5m	12 pieces x 30 bags/Carton	Upper limb or Lower limb
EB005	12.5.0cm×4.5cm	12 pieces x 24 bags/Carton	Upper limb or Lower limb

Stockinette

- It is made of cotton fiber or polyester and cotton mixed fiber or polyester fiber.
- It is good auxiliary products for casting tape and others bandage.
- As padding, it can protect skin and isolate the pollution.
- Several size can be used for different people.
- Special size can be produced according to orders request.



Specifications	Packaging
5.0cm×30m	1 roll *20 box/carton
10.0cm×40m	1 roll *10 box/carton
5.0cm×22.86m	32 pieces/carton
7.5cm×22.86m	24 pieces/carton
10cm×22.86m	16 pieces/carton
15cm×22.86m	12 pieces/carton
20cm×22.86m	8 pieces/carton

New Comfortable Stockinette

- Thicker , it can enhance the impact resistance and be more comfortable.
- High elasticity , it can touch the different body part closely .
- Big mesh, it let skin breathe freely.
- Water resistance , it can resistant the some water in life.



Specifications (thicker)
5.0cm×100cm
7.5cm×100cm
10cm×100cm
12.5cm×100cm
15cm×100cm

Electric Plaster Saw

- Can effectively cut any kind of plaster bandages or polymer casting tape.
- Using high-speed blade vibration system, left and right swing is no more than 5.6 degrees and will not scratch the skin.
- When using, hold the saw and the blade should be placed vertically on the cutting things surface and press slowly, if not sure to hurt skin, do not cut it into the bottom at one time, although the saw has a soft tissue protection function.





KANG DA BRAND SINCE 2001
TRUSTWORTHY AND RELIABLE



Beijing Jinwei Kangda Medical Instrument Ltd.

Add: 1st Building, No. 14 Courtyard, South Road of Western 3rd Ring-Road, Fengtai District, Beijing

Tel: +86-10-63334994 /63394999 Fax: +86-10-63334994

Web: www.kdbd.com.cn www.jwkd.en.alibaba.com